

SPP-R200III

2 inch Mobile Printer



Mobile POS
/ Retail



Deliveries

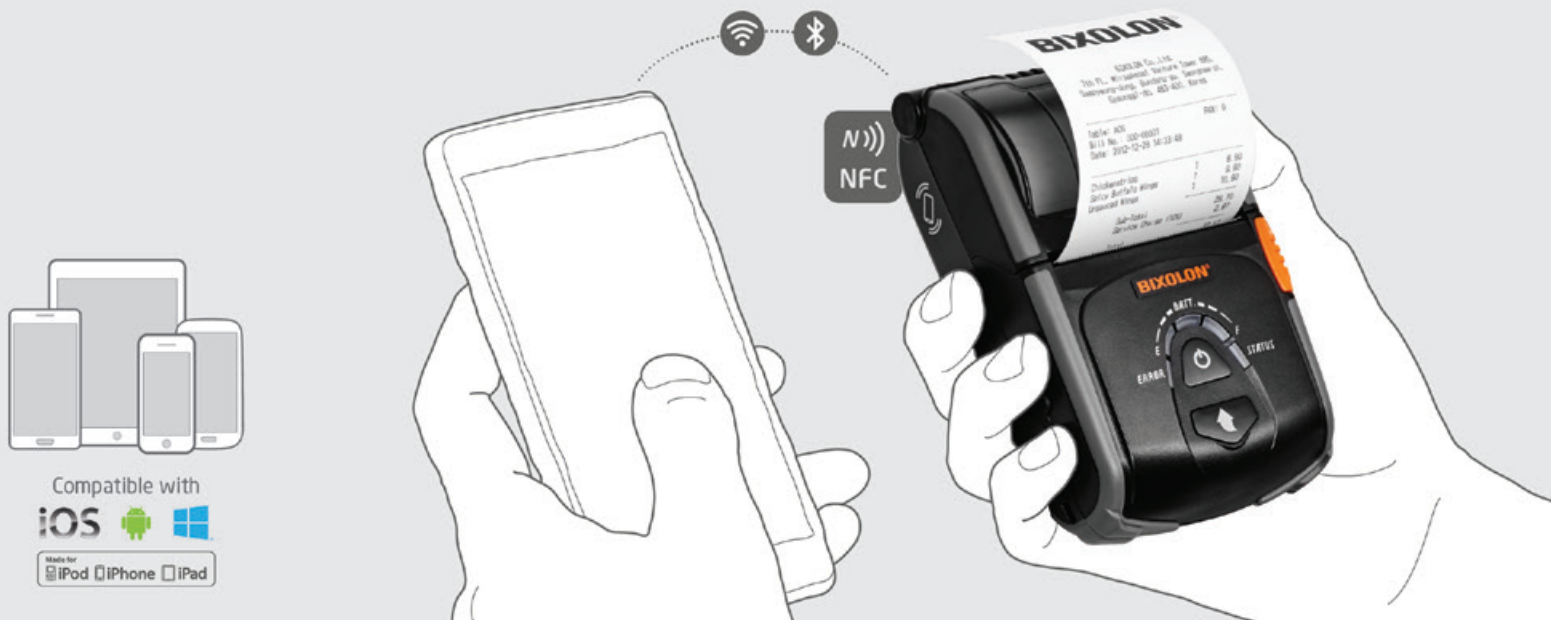


Customer
Service Center



Ticketing

A True Companion for Mobile Solutions



Mobile device compatible

- Wireless and wire connectivity options including Bluetooth, WiFi, USB and Serial.
- Embedded NFC tag enabling simple Auto-Bluetooth pairing.
- Compatible with all major operating systems including Android™, iOS™ and Windows®.
- Apple® MFi certified model (Auto-switchable from iOS mode to standard Bluetooth mode).
- Optional magstripe card reader.



Enhanced optimization for field service

- Compact, robust, 228g light-weight printer.
- 2.1 m / 7 ft. drop rate (1.5 m / 5 ft. drop rate for MSR model).
- IP43 (printer only) / IP54 (with protective case) water and dust proof.
- Accompanied by a wide range of carrying and charging accessories.
- Supporting continuous printing - 10 rolls 40 mm diameter paper (total 145 m) once fully charged.
- 24-hour stand-by time once fully charged (Bluetooth model in power save mode).



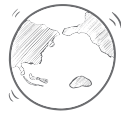
Seamless printing technology

- Print speeds up to 100 mm/sec (receipt): 11% faster than previous model.
- Designed for the dual purpose receipt and label printing (easy to switch through feed button).
- Optional linerless label printing.
- 58mm or 50mm (optional) media width.

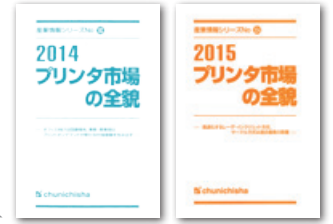


SPP-R200III

2 inch Mobile Printer



The World's No.1
mobile printer manufacturer



Reported by Chunichisha

Specifications

Printer Specifications

Print Method

Direct Thermal

Print Speed

Up to 100 mm/sec (Receipt)
Up to 80 mm/sec (Linerless)
12.5% pattern

Print Resolution

203 dpi

Print Width

Up to 48 mm

Sensor

Paper End: Reflective sensor
Paper Cover Open: Mechanical switch

Media Characteristics

Media Type

Receipt and Label, Linerless (optional)

Media Width

58 mm
50 mm (optional)

Media Roll Diameter

Up to 40 mm

Media Thickness

0.07 ± 0.005 mm

Supply Method

Easy Paper Loading

Physical Characteristics

Dimensions (WxLxD)

79.5 x 126.7 x 43.6 mm
(3.13 x 4.99 x 1.72 inch)

Weight

Including battery: 228 g (0.50 lbs.)
Including MSR: 238 g (0.52 lbs.)
Paper : 57 g (0.13 lbs.)

Battery

7.4V Li-ion, 1,200 mAh, Rechargeable
Charging time: Up to 2.5 hrs

Performance Characteristics

Memory

64 Mbit SDRAM, 32 Mbit FlashROM

Interface Options

USB V2.0 FS
Serial
Bluetooth V3.0 + EDR
WLAN 802.11b/g/n
(Infrastructure, Ad-hoc, Wi-Fi Direct)
- WEP40/104, WPA1/2(PSK, EAP)

Environment Characteristics

Temperature

Operating: -15 ~ 50°C (5 ~ 122°F)
Storage: -30 ~ 70°C (-22 ~ 158°F)

Humidity

Operating: 10 ~ 80% RH

Sealing

IP43 (IP54 with protective case)

Drop Rate

2.1 m (7 ft.) / 1.5 m (5 ft.) for MSR model

Software

Emulation

BXL / POS

Driver

Windows Driver, OPOS Driver, JPOS Driver,
Linux CUPS Driver

SDK

iOS SDK, Android SDK, Windows SDK

Fonts / Graphics / Symbologies

Character Size

Font A: 12 x 24 Font B: 9 x 17 Font C: 9 x 24
KOR, CHN, JPN: 24 x 24

Characters Per Line

Font A: 32 Font B, C: 42
KOR, CHN, JPN: 16

Character Sets

Alphanumeric: 95
Expanded Graphics: 128 x 33 page
International: 32

Graphics

Supporting user-defined fonts, graphics, formats,
layouts, and logos

Barcode Symbologies

1D: Codabar, Code 39, Code 93, Code 128, EAN-8,
EAN-13, ITF, UPC-A, UPC-E

2D: Aztec, Data Matrix, GS1 Databar, MaxiCode,
PDF417, QR code

Accessories

Standard

Belt Clip, Battery Pack, Battery Charger,
Power Cord, Paper

Optional

Belt Strap, Case, Protective Case, Shoulder Strap,
Battery Pack_V2 (with outer contacts),
Single Battery Cradle, Single Docking Cradle,
Quad Battery Charger, Quad Docking Cradle,
Cigarette Lighter Charger, Vehicle Holder,
Serial/USB Cable, Cleaning Pen

Integrated Card Reader (optional)

MSR

3 Track, DUKPT (optional),
T-DES Certified (optional)



BR-SRP-R200III-EN-NOV15-V1

Copyright © BIXOLON Co., Ltd. All rights reserved. Features and specifications are subject to change without prior notice.

BIXOLON®

BIXOLON Co., Ltd.
+82 (0) 31 218 5500
sales@bixolon.com

BIXOLON America Inc.
+1 858 764 4580
sales@bixolonusa.com

BIXOLON Europe GmbH
+49 211 68 78 54 0
sales@bixolon.de

www.bixolon.com

